



Quarterly Coalition Meeting

Working together to protect all Kansans from vaccine-preventable diseases.



Donate to IKC on Giving Tuesday



View IKC's Webpage



 @immunizekscoalition  @immunizekscoalition  @ImmKSCoalition



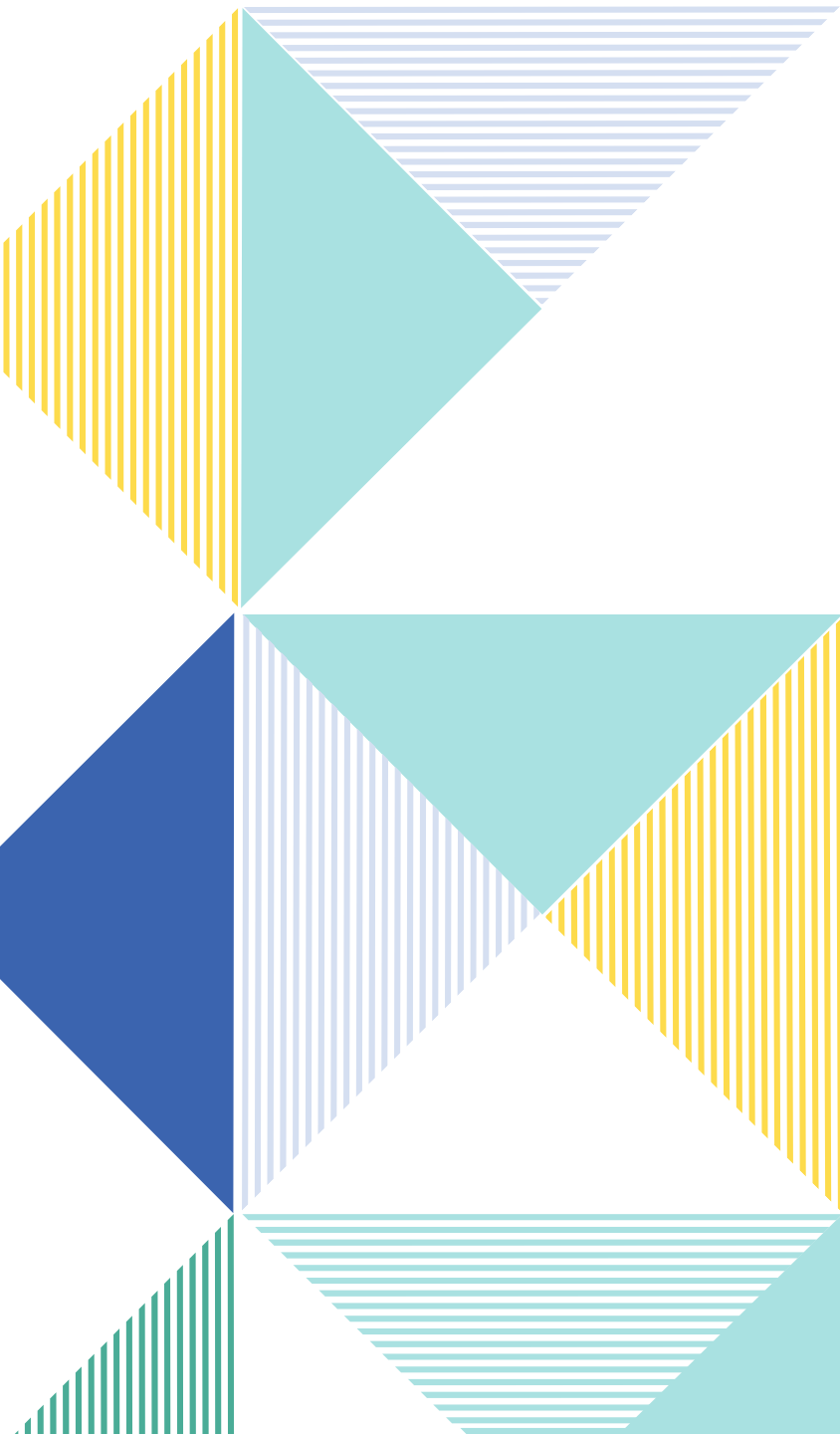
WELCOME

Brandan Kennedy, MD, FAAP, FABPM

IKC Chair

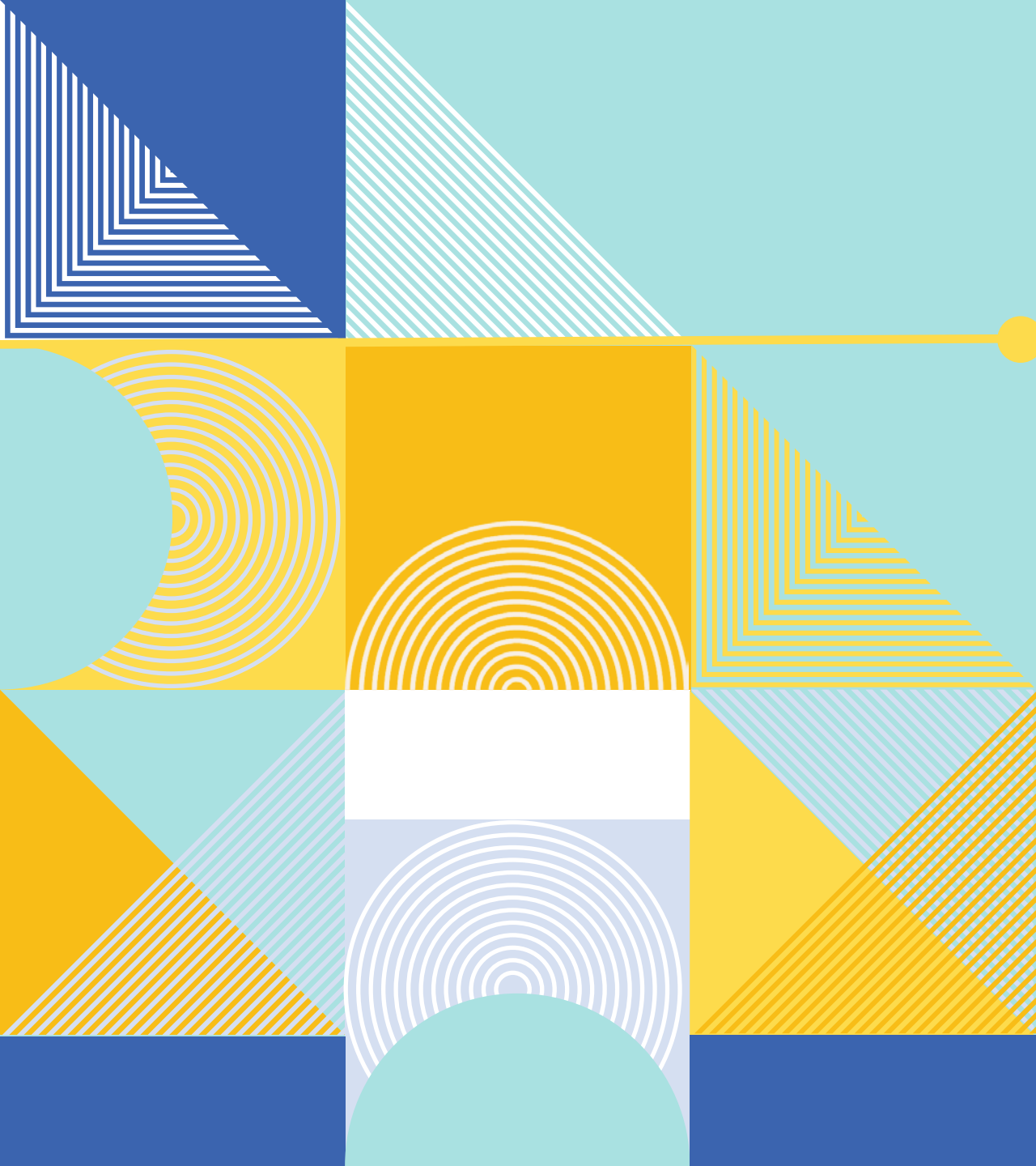


COALITION ANNOUNCEMENTS AND UPDATES



BOARD UPDATES AND INTRODUCTION OF IKC INTERIM EXECUTIVE DIRECTOR

Brandan Kennedy



REMARKS AND COALITION UPDATE

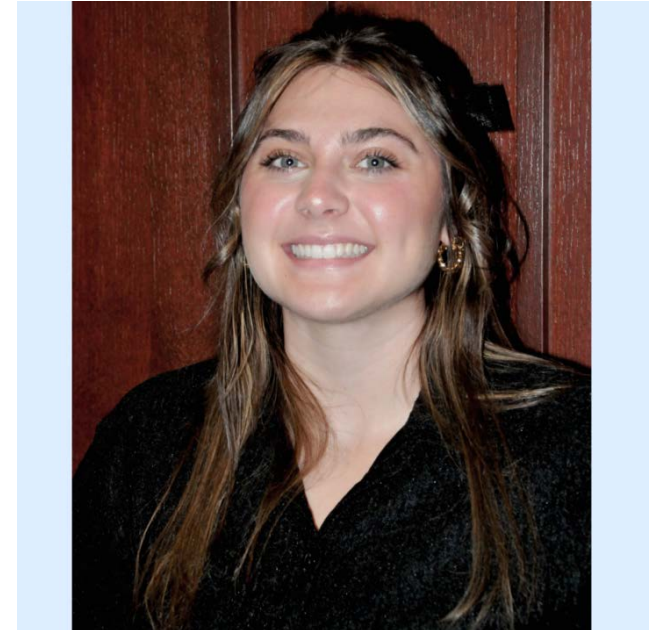
Carrie Riordan,
Interim Executive Director

INTRODUCTION OF NEW STAFF

Essence Miller



Alex Younger



IKC HIGHLIGHTS AND UPDATES

Amanda Applegate, PharmD, BCACP
IKC Immediate Past Chair

New 2023 NIS-Teen Data

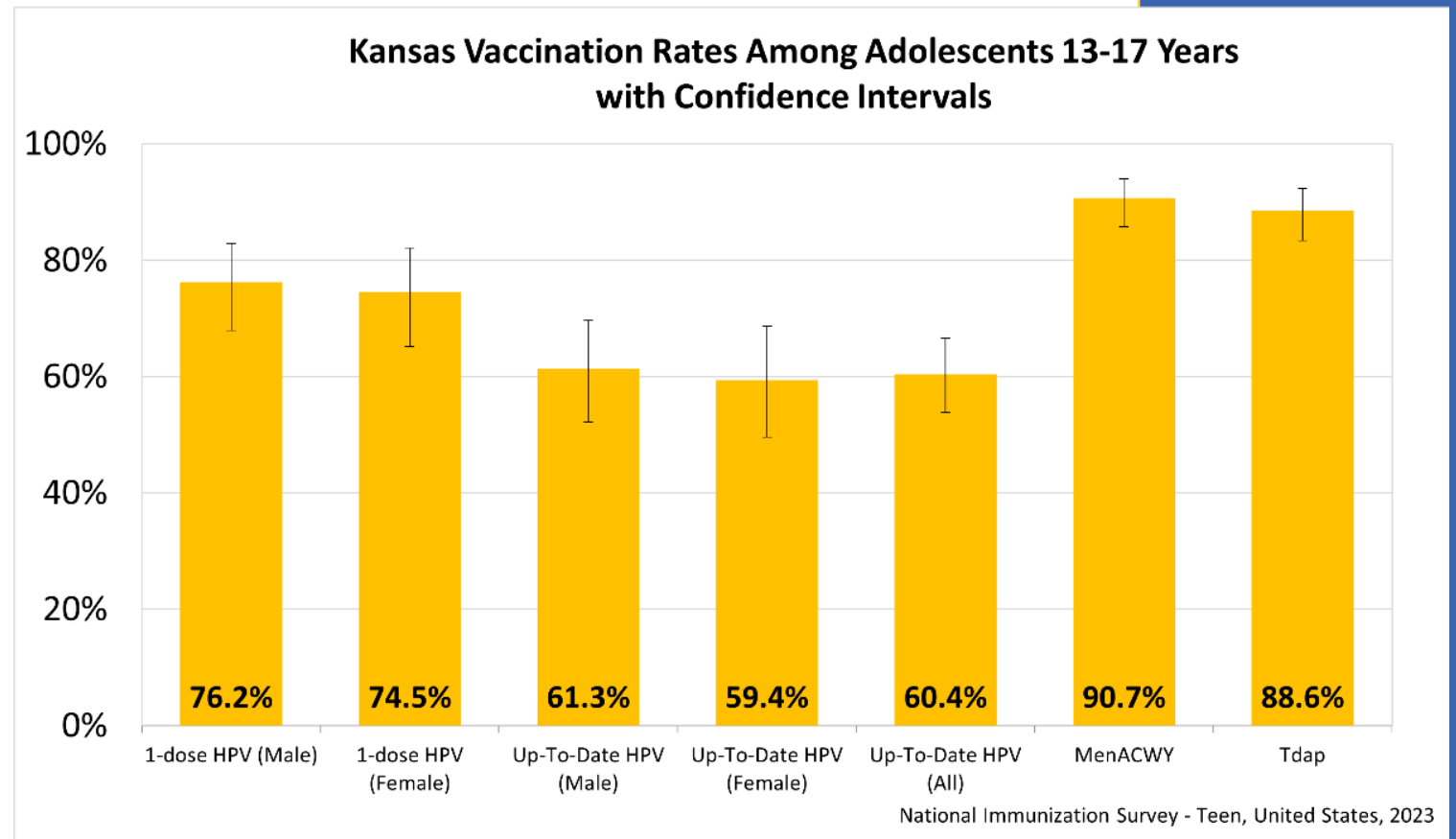
National Immunization Survey - Teen

[View IKC's Data Dashboard](#)



In summary:

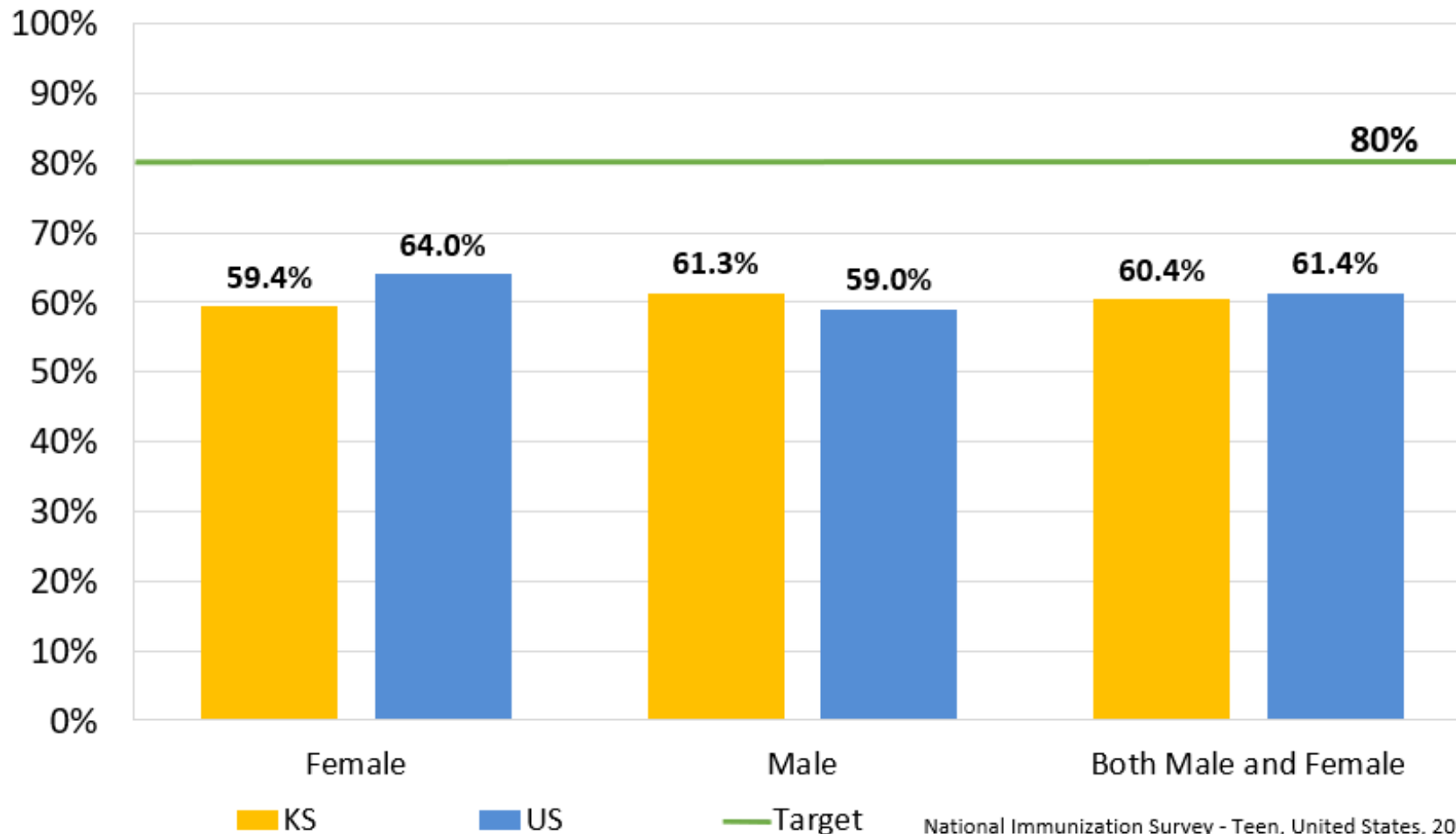
- Kansas mirrored national data for adolescents aged 13-17 years, holding mostly steady with mixed results by antigen.
- Most increases and decreases observed were not statistically significant.
- Data demonstrates that there is still work to do in all areas, particularly related to HPV vaccines.



The following graphs and estimates summarize changes without speaking to statistical significance. See CDC's TeenVaxView for additional data on other states, sample sizes, and confidence intervals for estimates.

HPV (Human papillomavirus) Vaccination

Up-To-Date HPV Vaccination Coverage
Among Adolescents Aged 13-17 Years



[View CDC's TeenVaxView](#)



[View IKC's Data Dashboard](#)



2023 Compared to 2022 NIS-Teen Estimates

In the below summaries, fonts are color-coded as follows regarding changes from 2022 to 2023 data:

Note: Color coding does not speak to statistical significance.

Right direction

Mostly level, with slight movement in the wrong direction

Wrong direction

- Kansas Up-To-Date Males and Females went from 60.7% to 60.4%
- Kansas ≥ 1 Dose Females went from 73.5% to 74.5%
- Kansas Up-To-Date Females went from 61.9% to 59.4%
- Kansas ≥ 1 Dose Males went from 73.4% to 76.2%
- Kansas Up-To-Date Males went from 59.5% to 61.3%

Kansas Rankings (Out of 50 States)

- #36** ≥ 1 Dose Females (Up from 42nd)
- #34** Up-To-Date Females (Up from 37th)
- #29** ≥ 1 Dose Males (Up from 36th)
- #31** Up-To-Date Males (Down from 30th)
- #33** Up-To-Date Males and Females (Down from 32nd)



Tdap Vaccination

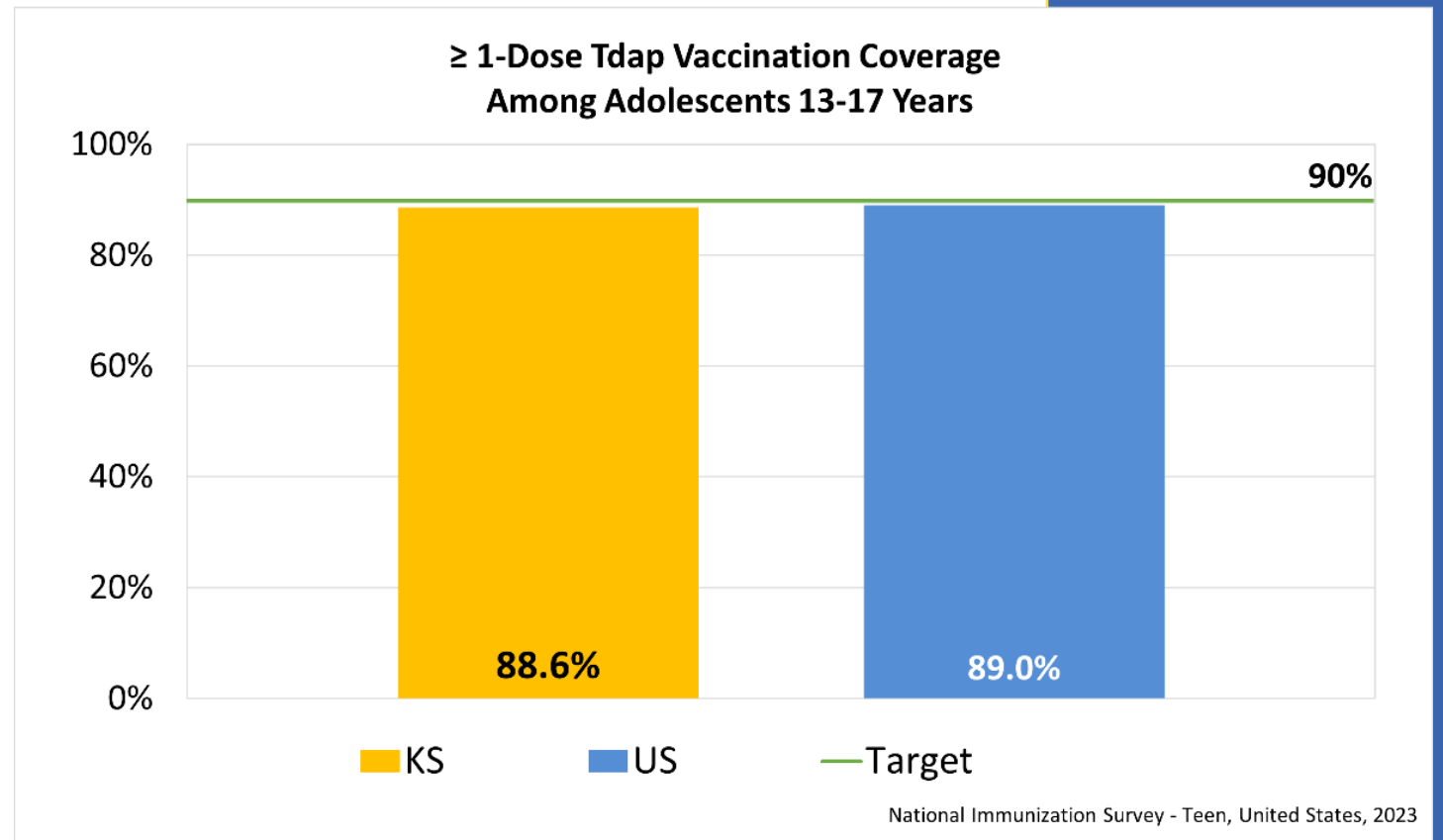
Tdap 2023 Compared to 2022 NIS-Teen Estimates:

- Kansas went from 89.2% to 88.6%
- U.S. went from 89.2% to 89.0%
- Kansas Ranking (Out of 50 States) was **#38** (Maintaining the same ranking as in 2022)

Td or Tdap Data Tracking:

- Kansas went from 89.5% to 89.3%
- U.S. went from 91.7% to 90.5%
- Kansas Ranking (Out of 50 States) was **#38** (Up from 41 in 2022)

View IKC's Data Dashboard



New NIS-Child Data: 2021 Birth Year/Cohort

National Immunization Survey - Child

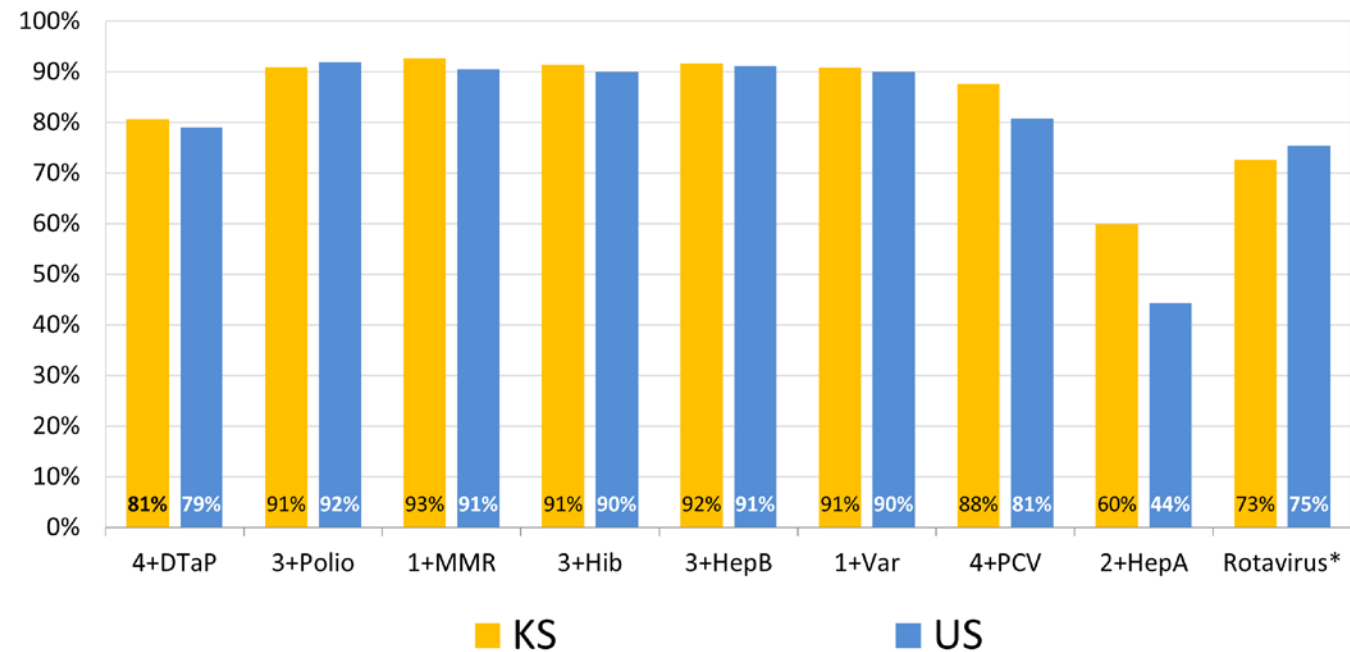
View IKC's Data Dashboard



In summary:

- Kansas reflected national vaccination coverage rates for children aged 0-24 months.
- Kansas data showed increases in all but one recommended vaccine compared to the previous year
- Ranked in the Top 10 for two vaccines compared to the other 50 states

Vaccination Coverage for Recommended Vaccines to be Completed by Age 24 Months



National Immunization Survey-Child, United States, 2021 Birth Year
*Rotavirus is for coverage by age 8 months

NIS-Child Data: 2021 Birth Year/Cohort

In the below summaries, fonts are color-coded as follows regarding changes from 2020 to 2021 data:

Note: Color coding does not speak to statistical significance.

Right direction

Wrong direction

View IKC's Data
Dashboard



- Kansas ≥ 4 Dose DTaP (Diphtheria, Tetanus, Pertussis) went from 74.8% to 80.7%
- Kansas ≥ 3 Dose Polio went from 89.8% to 90.9%
- Kansas ≥ 1 dose MMR (Measles, Mumps, and Rubella) went from 87.3% to 92.7%
- Kansas ≥ 3 dose HiB (Haemophilus influenzae type b) went from 87.1% to 91.4%
- Kansas ≥ 3 dose HepB (Hepatitis B) went from 89.9% to 91.6%
- Kansas ≥ 1 dose Varicella (Chickenpox) went from 86.7% to 90.8%
- Kansas ≥ 4 dose PCV (Pneumococcal) went from 75.4% to 87.6%
- Kansas ≥ 2 dose HepA (Hepatitis A) went from 48.6% to 60.0%
- Kansas Rotavirus coverage went from 78.7% to 72.6%*
 - *Rotavirus is for coverage by age 8 months

Entre Mujeres: The Health of Women

Hosted on October 26th in Garden City, KS

Entre Mujeres: The Health of Women

October 26, 2024 in Garden City, KS



Read the
recap article:




"A GLIMMER OF HOPE!"
Movie-Blogger.com

"VITAL!"
A.V. CLUB

"ILLUMINATING!"
Hollywood
REPORTER

"GO SEE THIS FILM!"
Forbes

SHOT IN THE ARM



Executive Producer
**NEIL DEGRASSE
TYSON**

Academy Award® Nominee
**SCOTT HAMILTON
KENNEDY**

On PBS stations now!
HEALING IS COMING
shotintheearmmovie.com



SHOT IN THE ARM is now streaming on PBS!

Both skeptical and hopeful, SHOT IN THE ARM explores vaccine hesitancy historically and in the context of our modern pandemic. Can we replace cynicism with healthy curiosity and bridge the political divides that make us sick?

Why You Should Watch:

Engaging Content: The film addresses contemporary issues and provides historical context, making it essential viewing for anyone interested in public health.

Expert Insights: Hear from leading experts and activists as they discuss the implications of vaccine misinformation

KEY IKC RESOURCES FOR RESPIRATORY SEASON

Featuring COVID-19, Flu, and RSV

View These Resources:



RESPIRATORY SEASON BROCHURE

The brochure is presented in two versions: English and Spanish. The English version features a yellow and blue color scheme. It includes a quote: "Working together to protect all Kansans from vaccine-preventable diseases." and the IKC logo. The Spanish version features a yellow and teal color scheme with a quote: "Trabaja juntos para proteger a todos los habitantes de Kansas de enfermedades prevenibles con vacunas." and the IKC logo. Both versions contain sections for "Staying Safe During Respiratory Season!", "What is Flu (Influenza)?", "What is RSV?", "What is COVID-19?", and "Stay Protected with Vaccines!". There are also QR codes and social media icons for each version.

KANSAS FIGHTS FLU CAMPAIGN



PREVENTING FLU EDUCATION MODULE

The cover of the education module is blue. It features the IKC logo and the text "IMMUNIZE KANSAS COALITION PREVENTING FLU". Below this, it says "Education Module designed for healthcare provider audiences". At the bottom, the website "immunizekansascoalition.org /educationmodules" is listed. There are three small photographs: a person lying in bed with a glass of water, a healthcare provider examining a child's arm, and a family of four smiling outdoors.

NEW! CONTINUING EDUCATION AVAILABLE

IKC'S Shutting The Door On HPV Education Module

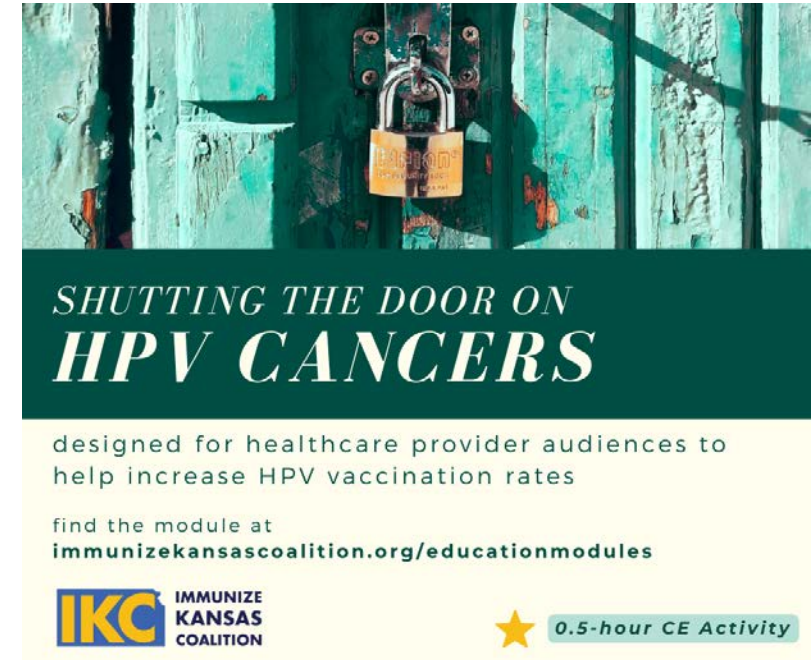
Estimated time to complete: 25-30 minutes
Audience: Healthcare Providers and Teams

Free for
providers!

After taking this module you will be able to:

- Explain why HPV vaccine is important enough to be routinely recommended for young people (i.e., HPV cancer prevention).
- Give an HPV vaccination recommendation that is effective and succinct using the same way, same day approach to the introduction of HPV vaccine.
- Answer the most frequently asked questions about HPV vaccine accurately and succinctly.

This is a **0.5-hour Continuing Education (CE) activity**. CE is available for **physicians, pharmacists, physician assistants, nurses, and nurse practitioners.**



*SHUTTING THE DOOR ON
HPV CANCERS*

designed for healthcare provider audiences to help increase HPV vaccination rates

find the module at
immunizekansascoalition.org/educationmodules

IKC IMMUNIZE
KANSAS
COALITION

★ 0.5-hour CE Activity



Celebrate IKC on Giving Tuesday December 3rd

IKC's Giving Fund
is NOW OPEN!



GIVING TUESDAY

DECEMBER 3

Donate!

Your Gift **IKC** IMMUNIZE KANSAS COALITION

helps to protect all Kansans from vaccine-preventable diseases.



immunizekansascoalition.org/donate

How does your donation support IKC?

Our grant funding streams have certain restrictions on how funds can be spent. Giving Tuesday donations will provide unrestricted funds that can be used where most needed. Every donation helps to support our mission, we're so thankful for your support.

NATIONAL INFLUENZA VACCINATION WEEK (NIVW)

DECEMBER 2-6, 2024



Find CDC Resources:



COMING UP - IKC ADVOCACY DAY & COALITION MEETING

JANUARY 30, 2025

- **Advocacy Day**

- Time: 8:30 a.m. – 2:00 p.m.
 - Advocacy Day Training
 - 10:00 – 10:30 a.m.
- Location: Kansas Health Institute followed by the Capitol Building

- **Coalition Meeting**

- Time: 9:00 – 10:00 a.m.
- Location: Kansas Health Institute Learning Center



Register!



REGISTER & MARK YOUR CALENDAR!

IKC's 2025 Coalition Meeting Dates

January 30, 2025

- Meeting & IKC Advocacy Day
- Topeka/Hybrid
- Meeting: 9:00 a.m. - 10:00 a.m.
Advocacy Day:
8:30 a.m. - 2:00 p.m.



April 25, 2025

- Garden City/Hybrid
- 10:00 a.m. - Noon



August 1, 2025

- Annual Coalition Meeting
- Topeka/Hybrid
- 9:00 a.m. - 2:30 p.m.



November 7, 2025

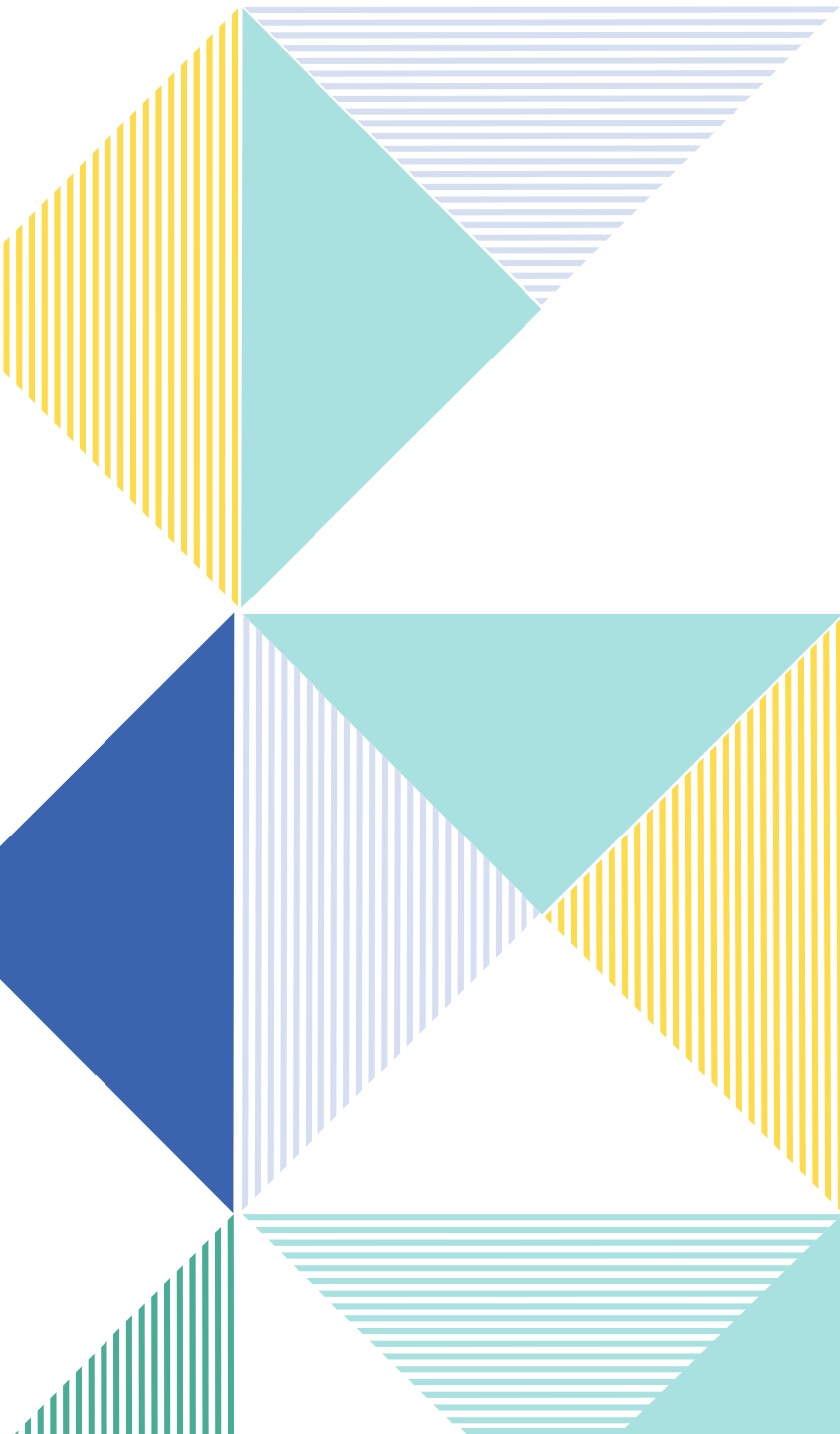
- Hybrid/location TBD
- 9:30 a.m. - Noon



Scan the QR codes above to register for each meeting.

IKC IN THE COMMUNITY





KPhA Partner Update

Amanda Applegate



STRATEGIC TEAM BREAKOUTS

- **Education & Awareness:** Stay in the “main” Zoom room
- **Policy**
- **Improved Systems Performance**
- **Health Equity**



STRATEGIC TEAM HIGHLIGHTS

Individual Team Report Outs and Coalition Action Items

- **Education and Awareness**
 - Stephania Lopez, BS (co-chair, leading today)
- **Policy**
 - Heather Braum, MLS
- **Improved Systems Performance**
 - Sarah Irsik-Good, MHA
- **Health Equity**
 - Jaclyn Miller, LMSW



KDHE KANSAS IMMUNIZATION PROGRAM REPORT

Rachel Sample, RN
Vaccine Operations Manager
KDHE

Vaccines for Adults Update

- **Very Limited Federal Funding – 317 Federal Funding**
- **VFA: Vaccine for Adults**
 - **Adults 19 years of age and older AND are one of the following:**
 - **Uninsured**
 - **Underinsured**
- **Fully insured individuals may receive 317 funded vaccines when a pre-approval from the KDHE, Kansas Immunization Program is given prior to the following situations:**
 - **Outbreak response**
 - **Post-exposure prophylaxis**
 - **Disaster relief efforts**
 - **Mass vaccination campaigns or exercises for public health preparedness**

<https://www.kdhe.ks.gov/DocumentCenter/View/31780/Bridge-Access-Program-Application-PDF>

Vaccines for Adults Update

- **The Kansas Immunization Program (KIP) is ensuring equitable distribution across the state with limited funding.**
- **The KIP is working with Local Health Departments and Federally Qualified Health Centers (FQHCs) to offer VFA doses in all counties.**
- **The KIP continues to work with IKC partners to help support vaccine events across the state.**
- **The original request of doses for the VFA program was about \$600,000 more than what Kansas has received in funding.**

- **CDC federally funded special program to provide seasonal influenza vaccines to farmworkers who work with livestock such as poultry, cattle, dairy, etc.**
- **Kansas was awarded a cap of 1,000 doses of seasonal influenza, and \$200,000 to distribute to partnering providers for operational expenses.**
- **Providers are eligible to partner to help in these efforts if enrolled with a VFA/317 provider agreement, have livestock operations within the county, and are able to report doses administered in KSWebIZ.**
- **Patients are eligible if they are 19 years and older AND work with livestock such as poultry, dairy, cattle, etc, regardless of insurance status with emphasis being given to those who are uninsured or underinsured.**
- **Federally funded program which runs through 6/30/2025.**

Seasonal Influenza for Livestock Farmworkers

Kansas was awarded a cap of 1,000 doses of seasonal influenza, and \$200,000 to distribute to partnering providers for operational expenses.

- **The 1,000 doses of seasonal influenza vaccine will be divided and distributed equitably across Kansas to providers wanting to partner in these efforts.**
- **The \$200,000 will be divided among the 1,000 influenza doses, allowing for \$200 per dose that is administered using mechanisms to alleviate reporting burdens.**
- **The \$200 per dose is intended for operational expenses including but not limited to:**
 - **Expenses incurred for providing mobile or on-site vaccination clinics**
 - **Signage and messaging in local newspapers or radio stations**
 - **Outreach to local community organizations and establishments where livestock farmworkers may frequent**
 - **Etc.**

- **Patients are eligible if :**
 - **They are 19 years and older AND**
 - **Work with livestock such as:**
 - **Poultry**
 - **Dairy**
 - **Cattle**
 - **Swine**
 - **Etc.**
 - **Regardless of insurance status with emphasis being given to those who are uninsured or underinsured.**
- **This grant does NOT allow these specifically funded doses to be administered to meatpacking industry employees.**
- **This grant does NOT allow these specifically funded doses to be administered to family members of livestock farmworkers.**

Vaccines for Children Update

- **The Kansas Immunization Program (KIP) continues working with onboarding Birthing Hospitals into the Vaccines for Children (VFC) Program.**
- **Currently the KIP has 321 enrolled VFC providers, compared to the 319 providers enrolled in 2023.**
- **An increase of 0.6% of newly enrolled providers for this fiscal year, beginning in June.**



- **Dena Rueb is now the IQIP Coordinator**
- **IQIP: Immunization Quality Improvement for Providers**
- **7 Regional Immunization Nurses covering all of Kansas and the different federally funded vaccine programs.**



PARTNER UPDATES AND ANNOUNCEMENTS

Heather Schrotberger, KHSA



KANSAS
HEAD START
ASSOCIATION

E-MAIL:

hschrotberger@ksheadstart.org

WEB:

www.ksheadstart.org

HEAD START IN KANSAS

HEAD START

Preschool for
children ages
3 to 5

EARLY HEAD START

Home visiting
and child care
for pregnant
women and
children ages
0 to 3

EHS-CCP

Child care for
in partnership
with
community
child care
providers

90-day
determination

Ongoing
support

At enrollment:
75.5%

At end of
enrollment:
78.3%

HEAD START AND IMMUNIZATIONS





PARTNER UPDATES AND ANNOUNCEMENTS

Kimber Kasitz, KSNO

Karen Braman, KHA

Open Announcements and Updates



REMINDERS AND CLOSING REMARKS

Brandan Kennedy, MD, Chair

Next Meeting: January 30, 2025

9:00 a.m. - 10:00 a.m.

Advocacy Day

8:30 a.m. - 2:00 p.m.

REGISTER & MARK YOUR CALENDAR!

IKC's 2025 Coalition Meeting Dates

January 30, 2025

- Meeting & IKC Advocacy Day
- Topeka/Hybrid
- 9:00 a.m. - 10:00 a.m.
 - Advocacy Day: 8:30 a.m. - 2:00 p.m.

April 25, 2025

- Garden City/Hybrid
- 10:00 a.m. - Noon

August 1, 2025

- Annual Coalition Meeting
- Topeka/Hybrid
- 9:00 a.m. - 2:30 p.m.

November 7, 2025

- Hybrid/location TBD
- 9:30 a.m. - Noon

